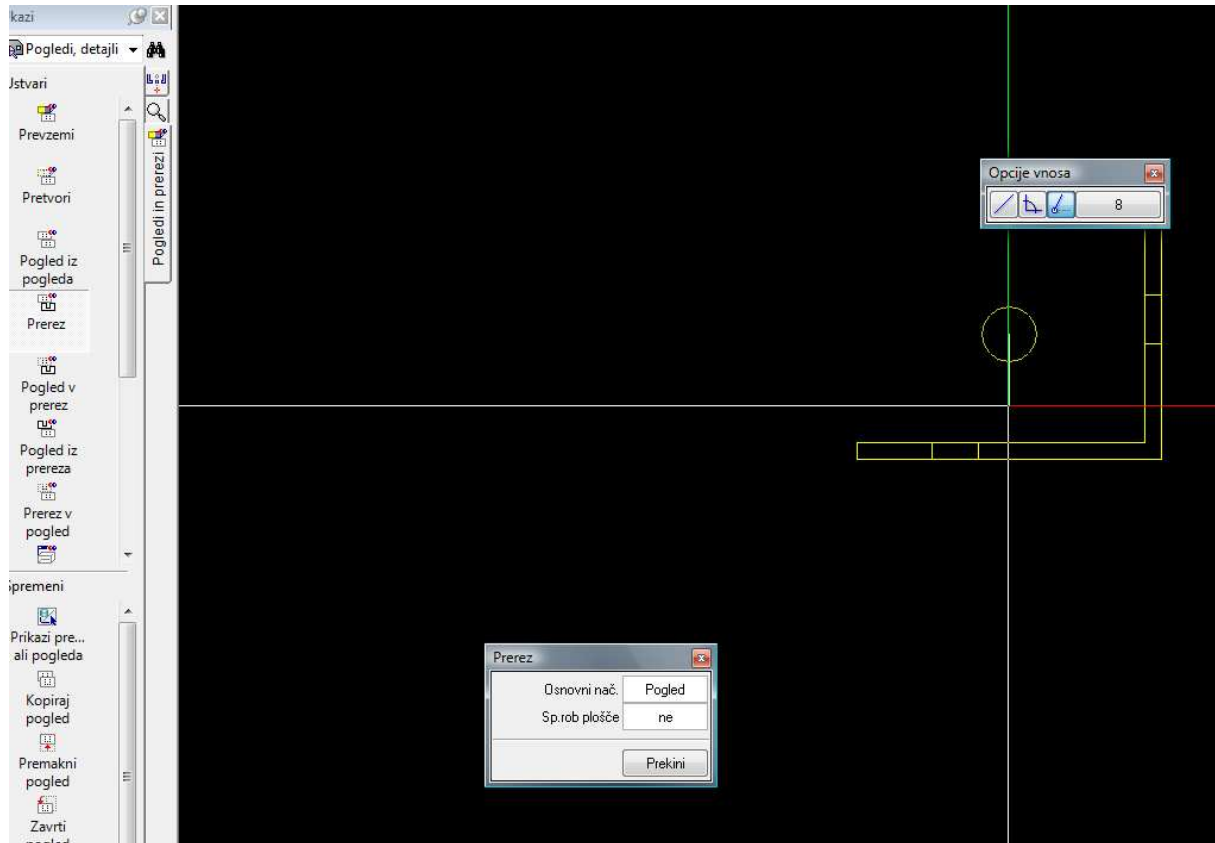


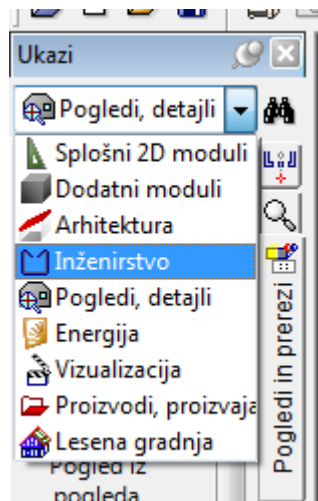
1. Vaja: (Armiranje stene)

1. Korak (določitev prerezov)

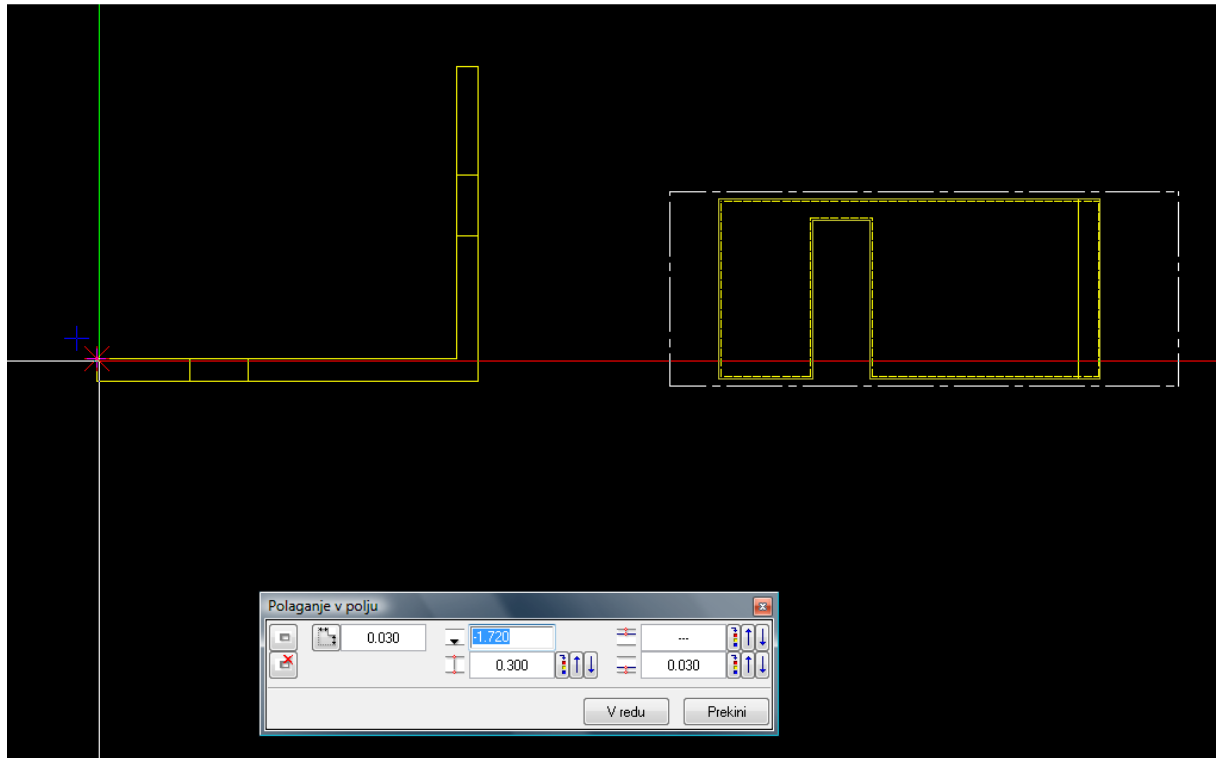


2. Korak (ko smo določili prereze gremo v modul inženirstvo)

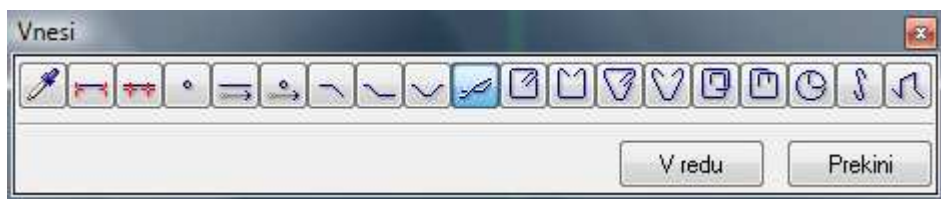
- Polagamo mreže
- Polagamo palice



Določitev poligona za mreže



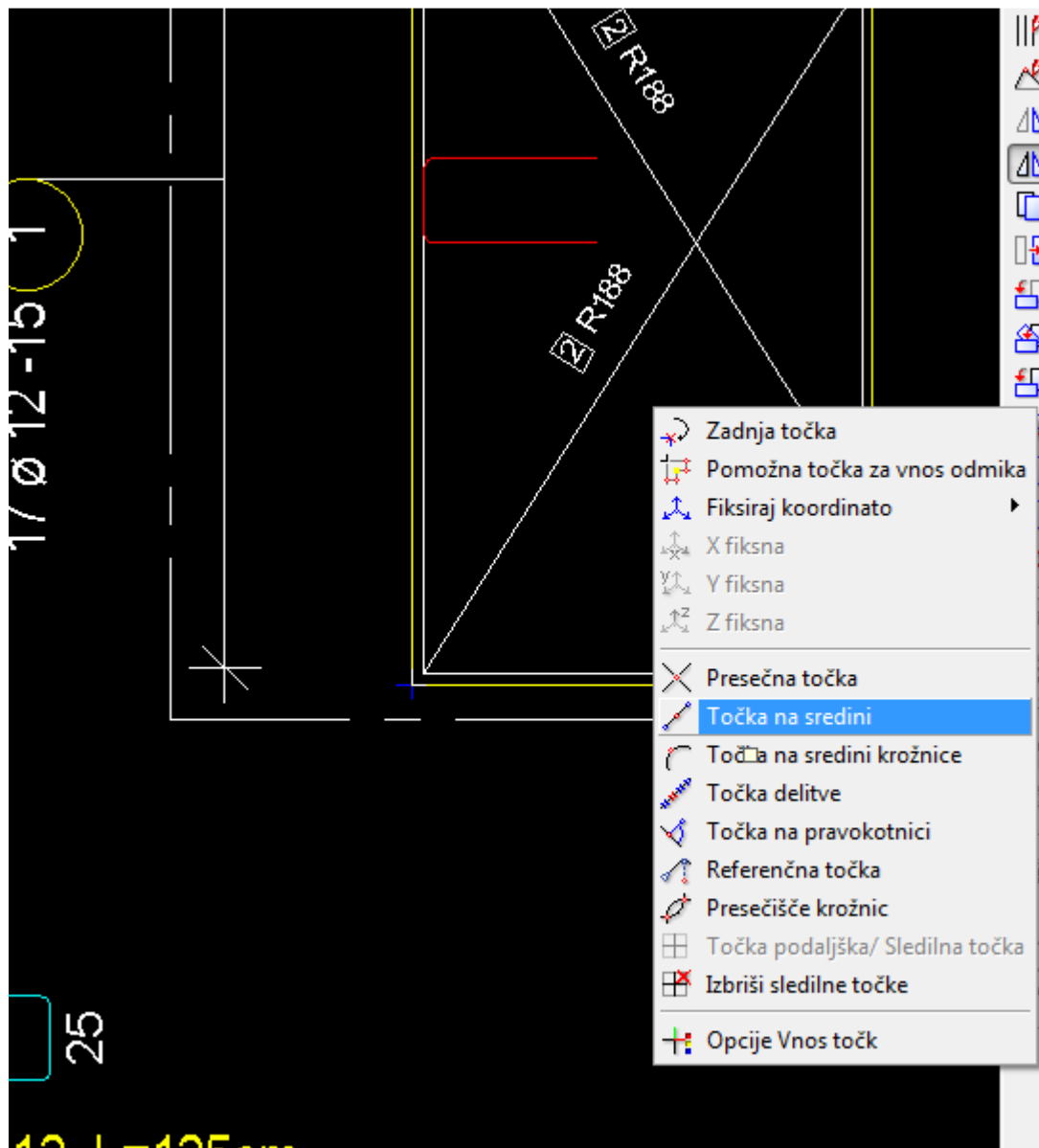
Risanje palic



Polaganje palic

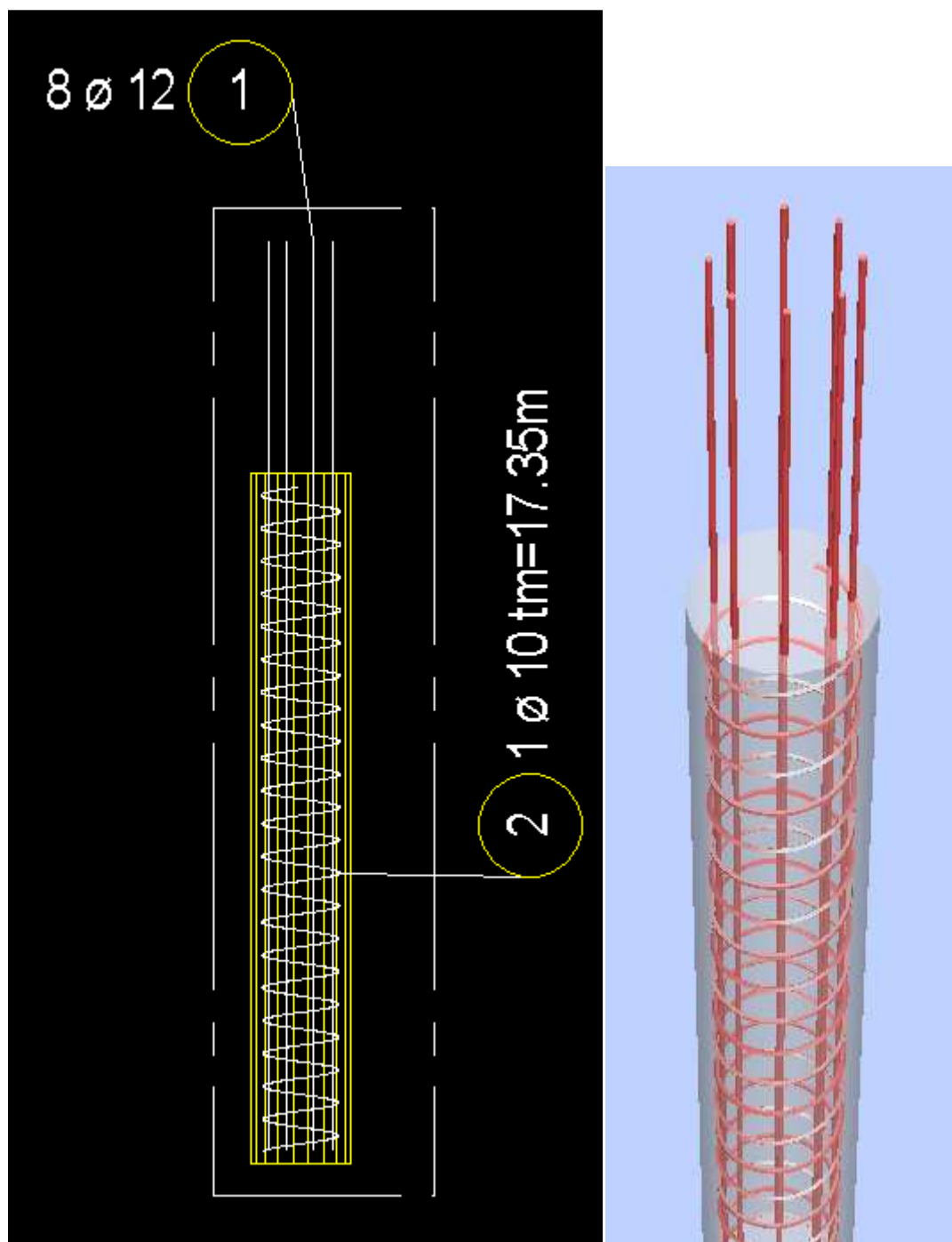


Kopiranje armature

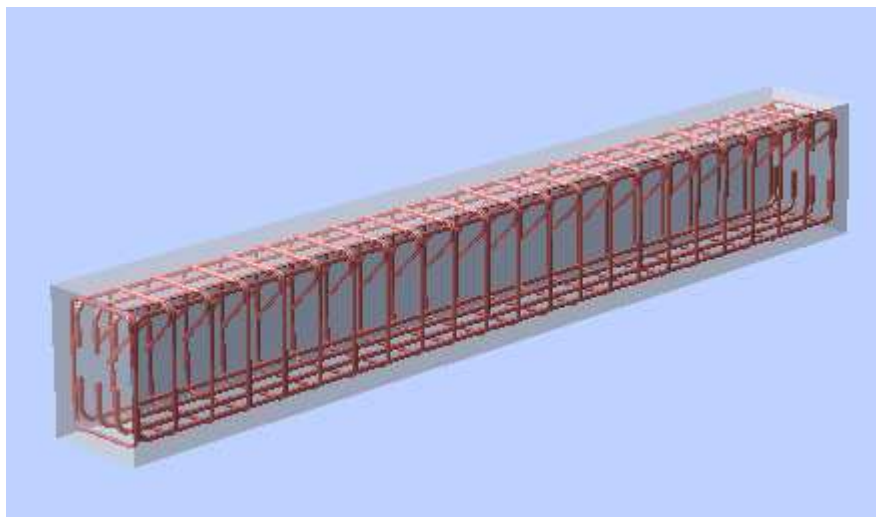
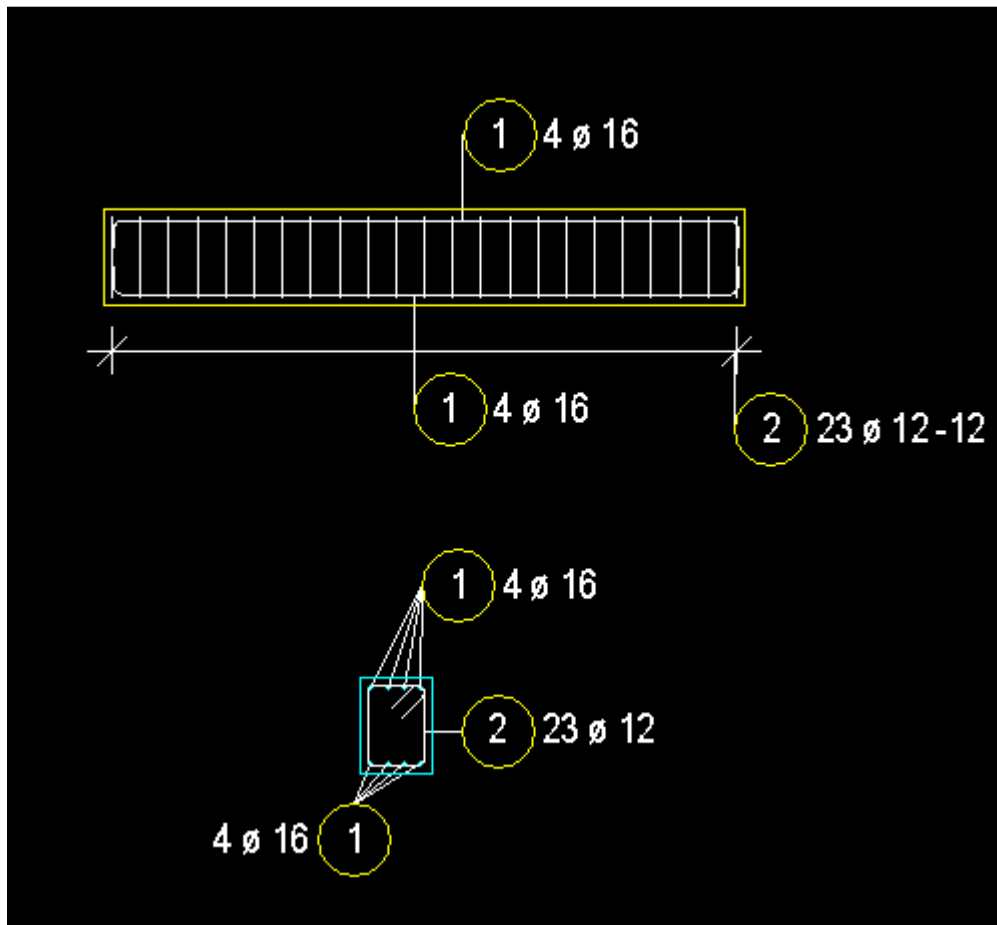


Stene bomo poarmirali tudi spalicami

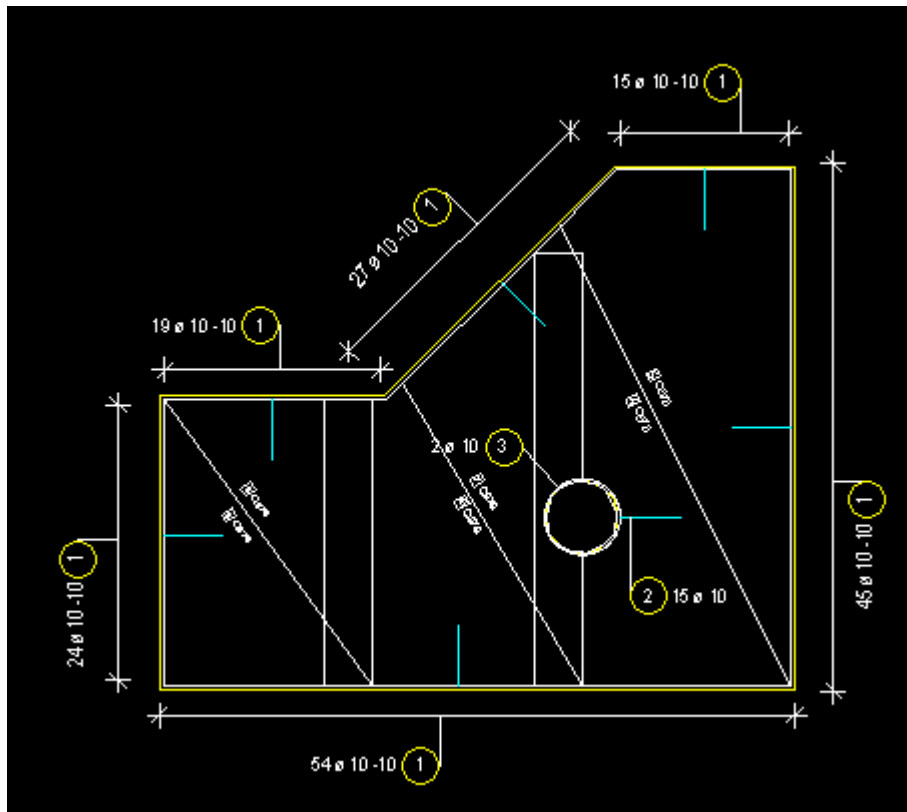
2. Vaja (Armiranje stebrov)



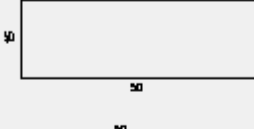
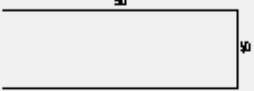

3. Vaja (Armiranje preklade)



4. Vaja (Armiranje plošče)



5. Vaja (Izvlečki armature)

Seznam palic - krivljenje							
Projekt tečaj							
K risbi:				Datum: 17.2.2011			
Gr. element:				Seznam: 1			
Poz.	Kom	FI [mm]	Posam. Dotžina [m]	Kotirane palice (ϕ i u merilo)	Skupna Dotžina [m]	Količ [kg]	Opomba
1	184	10	1.15		211.60	130.56	
2	15	10	1.15		17.25	10.64	
3	2	10	2.71		5.42	3.34	
				Skupna teža [kg]:		144.54	
							Stran: 1

Seznam palic

Projekt: tečaj

Križbi:

Datum: 17.2.2011

Gr. element

Seznam: 1

Poz.	Kosov	Fl	Dožilja	Skupna Dožilja	Količ	Skupna Količ
		[mm]	[m]	[m]	[kg/m]	[kg]
1	184	10	1.15	211.60	0.617	130.56
2	15	10	1.15	17.25	0.617	10.64
3	2	10	2.71	5.42	0.617	3.34

Mere / izvedba [kg] 144.54

Številko izvedb 1

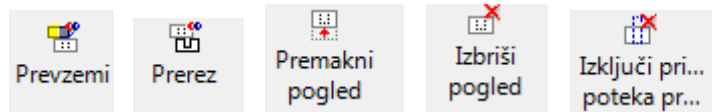
Skupna masa [kg] 144.54

Stran:

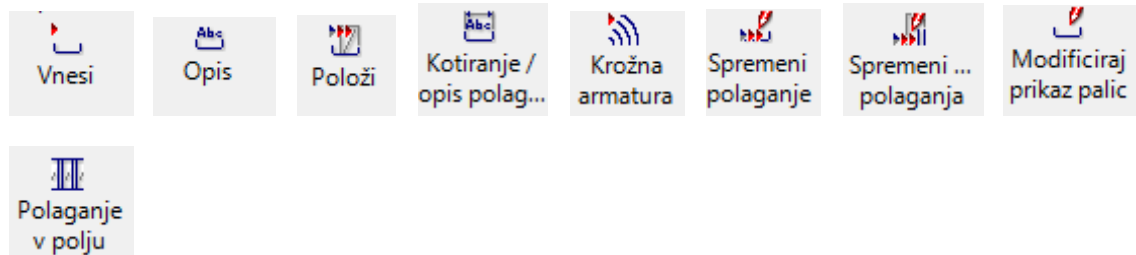
2

Najbolj pogosti ukazi na tečaju

Pri določanju prerezov



Pri armiranju



Sploši ukazi



Merilo: 1 : 50 Dolžina: m Kot: 0.000

